



ASSOCIAZIONE PER LA CONSERVAZIONE DELL'ORSO BRUNO MARSCANO

ACCOMMODATION INFORMATION

There are three accommodation options, that are defined according to availability:

Pettorano sul Gizio

The accommodation is provided by the Monte Genzana Alto Gizio Nature Reserve, in the old town of Pettorano sul Gizio, located inside the Reserve itself.

Casali d'Aschi

Hamlet in the municipality of Gioia dei Marsi: it is close to the Abruzzo, Lazio and Molise National Park (PNALM) and to one of the best viewing-spots for seeing bears in the region. It is also located in the wildlife corridor connecting the National Park to the Simbruini Mountains Regional Park.

Ortona dei Marsi

In the heart of the wildlife corridor connecting the Abruzzo, Lazio and Molise National Park to the Sirente Velino Regional Park, the town is located in the beautiful Giovenco Valley.

Details of the Reserve:

Name: Riserva Naturale Regionale Monte Genzana Alto Gizio

Address: Piazza R. Zannelli, 12
67034, Pettorano sul Gizio (AQ), Italy

Area: 3,160 ha

Telephone: +39 0864 487006

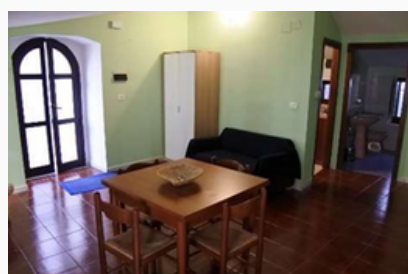
E-mail: info@riservagenzana.it



Accommodation

The Municipality and the Monte Genzana Alto Gizio Nature Reserve will provide our volunteers with guesthouse accommodations in Pettorano sul Gizio.

Accommodation availability: 6 people in shared bedrooms (max 4 people in each room).



Address:

- Guesthouse Pajare: via Scalelle snc, 67034, Pettorano sul Gizio (AQ), Italy
- Guesthouse in Rua Frisciotta 2, 67034, Pettorano sul Gizio (AQ), Italy.

How to reach Pettorano sul Gizio



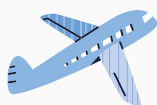
By car: From A25 motorway Rome-Pescara, exit at Sulmona-Pratola Peligna, then road SS17 towards Roccaraso for about 20 Km. From Naples: From A1 motorway, exit at Caianello, then SS85 towards Isernia-Campobasso-Roccaraso and finally SS17 towards Roccaraso-Sulmona (Pettorano sul Gizio is about 27 Km from Roccaraso).



By train: Trains from Rome, Pescara or L'Aquila to Sulmona station.
Info: Trenitalia



By bus: TUA buses from Sulmona and TUA and SATAM buses from Pescara-Naples (please, mind that SATAM do not stop at Pettorano sul Gizio, but they stop at Sulmona). From Rome, you can take TUA buses from Tiburtina station to Sulmona (about 2-hour trip) and then the sub-urban bus to Pettorano sul Gizio. TUA and SATAM buses from Naples leave from Stazione Garibaldi, buses from Pescara leave from the Bus Terminal, in the square in front of the Central railway station.



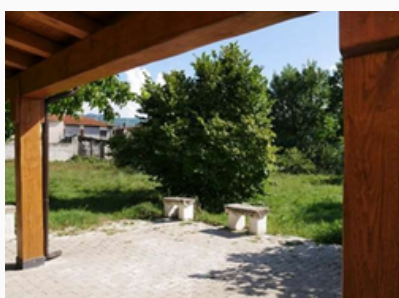
By plane: The closest airports are the Abruzzo airport in Pescara or Ciampino and Fiumicino airports in Rome. Those who arrive in Rome airports can take a Prontobus to Pratola Peligna (the closest stop to Pettorano sul Gizio) directly from the airport. The trip takes 2-2.5 hours (it depends on the traffic in Rome).

Those who want to spend a day or few hours visiting the Eternal City of Rome can take a train or a bus to Sulmona from Tiburtina station (also connected to underground line B).
You will get to Sulmona in about 2 hours by bus and 3-3.5 hours by train.

Accommodation

The association provides accommodation in a house with a garden in the municipality of Gioia dei Marsi.

Accommodation availability: 5 people in 2 shared bedrooms (2 places and 3 places respectively).



Address:

Via San Giorgio 5, loc. Casali d'aschi
67055 Gioia dei Marsi, Italy



How to reach Gioia dei Marsi



By car: from A 25 motorway Rome-Pescara, exit at Pescara, then road SS83 Marsicana towards Gioia dei Marsi for about 15 Km.

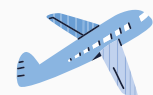
From Naples: from A1 motorway, exit at Cassino, then State Road Sora – Cassino, exit Avezzano, SP 20 towards Pescara, then SS83 towards Gioia dei Marsi.



By train: Trains from Rome, Pescara or L'Aquila to Avezzano or Pescara. Info: Trenitalia



By bus: TUA buses from Rome-Pescara and TUA and SATAM buses from Pescara-Naples. TUA buses Avezzano-Gioia dei Marsi. From Rome, you can take TUA buses from Tiburtina station to Sulmona (about 1-hour trip) and then the sub-urban bus to Gioia dei Marsi. TUA and SATAM buses from Naples leaves from Stazione Garibaldi, buses from Pescara leave from the Bus Terminal, in the square in front of the Central railway station.



By plane: The closest airports are the Abruzzo airport in Pescara or the Ciampino and Fiumicino airports in Rome. Those who arrive in Rome airports can take a Prontobus to Avezzano (the closest stop to the accommodation) directly from the airport. The trip takes about 1.5-2 hours (it depends on the traffic in Rome).

Those who want to spend a day or few hours visiting the Eternal City of Rome can take a train or a bus to Avezzano from Tiburtina station (underground line B). You will get to Avezzano in about 1 hour by bus and 2 hours by train.

Those who want to spend a day or few hours visiting the Eternal City of Rome can take a train or a bus to Avezzano from Tiburtina station (underground line B). You will get to Avezzano in about 1 hour by bus and 2 hours by train.

In the heart of the wildlife corridor connecting the Abruzzo, Lazio and Molise National Park to the Sirente Velino Regional Park, the town is located in the beautiful Giovenco Valley.

Accommodation

The association provides accommodation in a guesthouse in Ortona dei Marsi. Accommodation availability: 10 people in 5 shared bedrooms (2 triple rooms and 2 double rooms) with a private bathroom per room.



Address:

Via Piano 52,
67050 Ortona dei Marsi, Italy

How to reach Ortona dei Marsi



By car: from A 25 motorway Rome-Pescara, exit at Pescara, then road SP17 towards Ortona dei Marsi for about 10 Km.

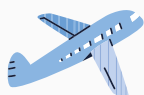
From Naples: from A1 motorway, exit at Cassino, then State Road Sora – Cassino, exit Avezzano, take the SP20 road to Pescara, then take SP17 towards Ortona dei Marsi for about 10km.



By train: Trains from Rome, Pescara or L'Aquila to Avezzano or Pescara. Info: Trenitalia

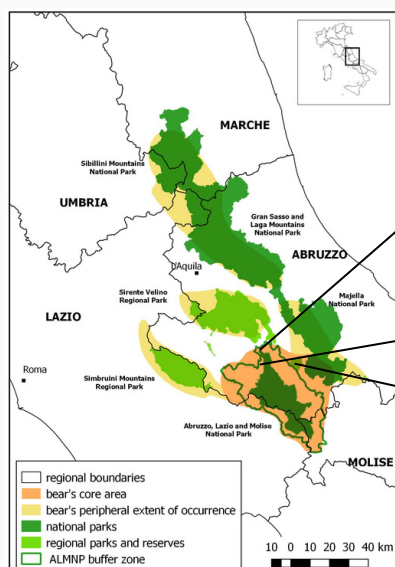


By bus: TUA buses from Rome-Pescara and TUA and SATAM buses from Pescara-Naples. There are suburban TUA buses from Avezzano to Ortona dei Marsi. From Rome, you can take TUA buses from Tiburtina station to Avezzano (about 1-hour trip) and then the sub-urban bus to Ortona dei Marsi. TUA and SATAM buses from Naples leaves from Stazione Garibaldi, buses from Pescara leave from the Bus Terminal, in the square in front of the Central railway station.



By plane: The closest airports are the Abruzzo airport in Pescara, and the Ciampino and Fiumicino airports in Rome. When arriving in Rome airports, you can take a Prontobus to Avezzano (the closest stop to the accommodation) directly from the airport. The trip takes about 1.5-2 hours (it depends on the traffic in Rome).

Those who want to spend a day or few hours visiting the Eternal City of Rome can take a train or a bus to Avezzano from Tiburtina station (connected also to underground line B). You will get to Avezzano in about 1 hour by bus and 2 hours by train.



Ortona dei Marsi

Gioia dei Marsi

Pettorano sul Gizio

Location of the three towns where we host volunteers

Useful numbers

Carabinieri	Pronto soccorso (Ambulance)	Carabinieri forestali (Forestry Corps)	Vigili del Fuoco (Fire Fighters)
112	118	1515	115

Nearest urgent care health services

Pettorano sul Gizio:

The closest hospital is SS. Annunziata in Sulmona (about 15-minute drive from Pettorano sul Gizio) in Viale Mazzini no 100, tel. + 39 0864 4991, +39 0864 499455.

Gioia dei Marsi and Ortona dei Marsi:

- **Pescina hospital:** (about 10-minute drive from Gioia dei Marsi and Ortona) in Via S. Rinaldi, tel. +39 0863 8991.
- **Avezzano hospital:** (30-minute drive from Gioia dei Marsi and Ortona) Presidio Ospedaliero "S. Filippo e Nicola", Via Giuseppe Di Vittorio, Avezzano, tel. +39 0863 4991.

Costs



- €300 a month per volunteer (including heating, Wi-Fi, power and water consumption expenditures included), tutoring and Italian incident and public liability insurance*.
- A €100 advanced payment is required to secure your place, please contact us for details.

*It would be desirable if you also had an insurance from your country of origin.

Please, be responsible for the good maintenance of the accommodation and facilities, for yourselves and following users.

Equipment to bring with you from home

- A pair of good trekking shoes, supporting the ankle,
- Breathable clothes,
- Cap,
- Protective cream (you can buy it when you get here),
- Sun glasses,
- Warm clothes for the evening and/or the colder seasons,
- Rain jacket,
- Fleece sweatshirt and a heavy jacket for wildlife observation at dawn/sunset,
- Sleeping bag.
- It would be great if you had a GPS app on your mobile.



Electricity supply in Italy is 220 volts with 3 pin wall sockets. You may need adapters.

General recommendations and rules of behaviour

We are all volunteering our time to carry out all necessary actions for the conservation of the Marsican brown bear. Any problem, request or doubt, please, feel free to inform the contact person. As volunteers, you are not forced to do things against your will, but do not forget that this is a great opportunity to learn and help the environment, bears and the local communities to co-exist.

Please, remember that you represent Salviamo l'Orso at all times, and any misbehaviour may affect your relationship with our association and your final evaluation. Please, follow these simple rules of behaviour and feel free to ask for any further clarification. Salviamo l'Orso believes that all planned activities are within your reach, but do not be shy and inform your supervisor if you do not wish to undertake some of them, please. Please, be aware that sometimes we may have activities also in the weekends, because, as an association of volunteers, working people are usually more available on Saturdays and Sundays. If you volunteer your time during the weekend, you can have some days off as compensation.

Please, be aware that you will be in charge of valuable material (GPS, trail cameras, binoculars, spotting scope), which is property of Salviamo l'Orso and of partner organisations, Nature Reserves and National Parks. So, please, handle it with care. Refrain from using any part of house equipment outside not to damage it, affecting the comfort of the next guests.

Inform the supervisor about any ill functioning of house systems so that our staff can fix the problem as soon as possible.

Dispose of your waste according to local regulations.

Please, do not wear earphones while you are in a natural environment to be able to listen to all sounds of nature. Refrain from talking loud not to scare animals, unless you do it on purpose to make them aware of your presence and avoid a potentially dangerous situation.

Please, communicate with a 1-2 day notice your arrival so that our volunteers can pick up you on time at the closest arrival hub.

Never forget to inform the contact person if you are going on a trip.

Do not forget to give us your mobile phone number so that we can contact you if needed.

Be eco-friendly in all your behaviour.

Have a nice journey and a wonderful experience!



volontariato@salviamolorso.it

www.salviamolorso.it